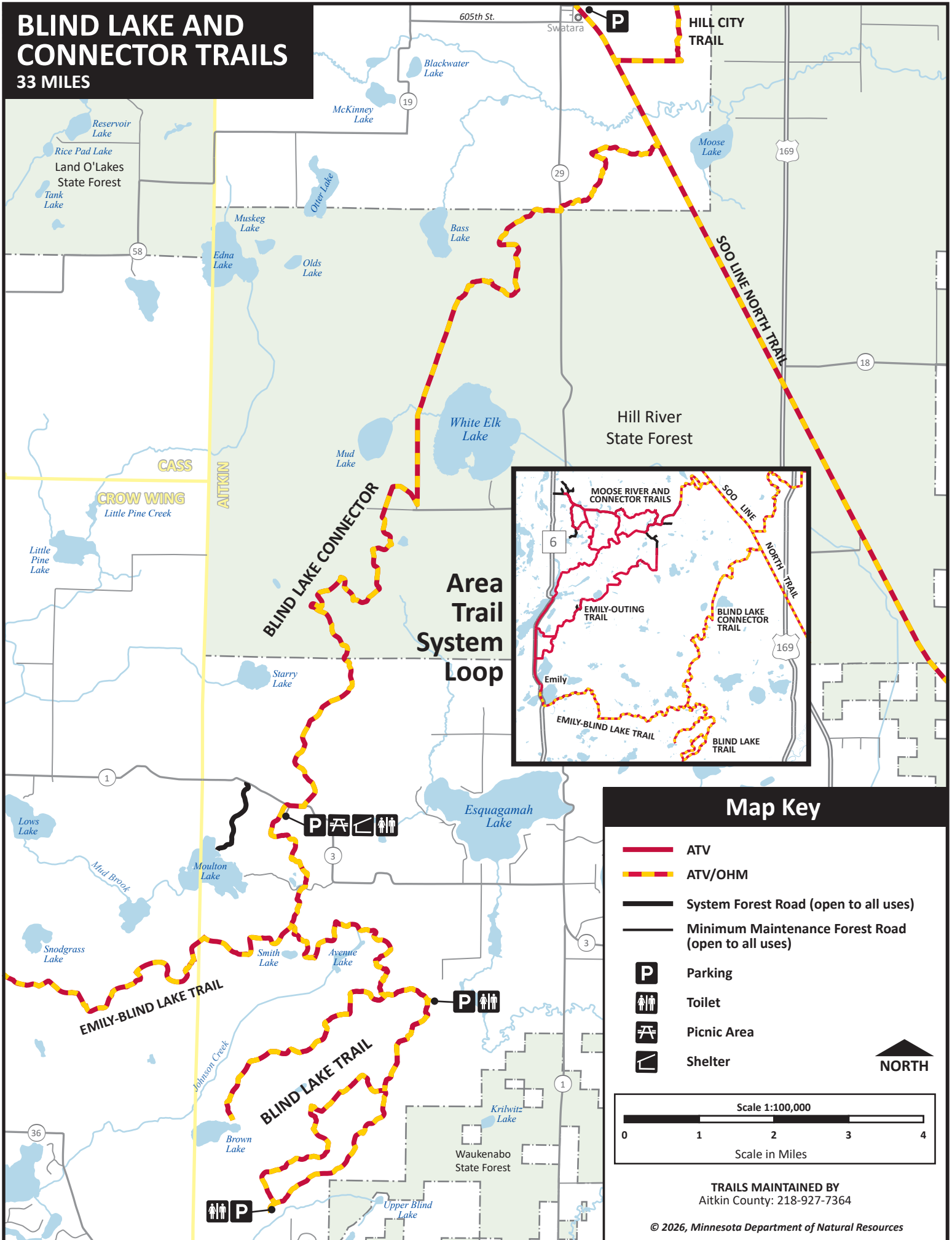


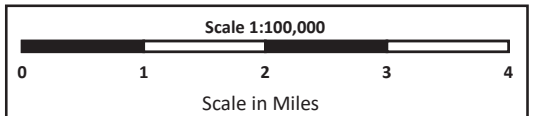
# BLIND LAKE AND CONNECTOR TRAILS

33 MILES



## Map Key

- ATV
- ATV/OHM
- System Forest Road (open to all uses)
- Minimum Maintenance Forest Road (open to all uses)
- P** Parking
- Toilet
- Picnic Area
- Shelter



TRAILS MAINTAINED BY  
Aitkin County: 218-927-7364