









STONY SPUR II / JACKPOT LOOP TRAILS - 60 MILES

Map Key

-  ATV/OHM
-  ATV/OHM (Prospectors)
-  ATV/OHM (Class 1 ATVs only)
-  Club Trail (ATV/OHM)

-  Parking
-  Shelter
-  Picnic Area
-  Toilet
-  Campsite
-  Information

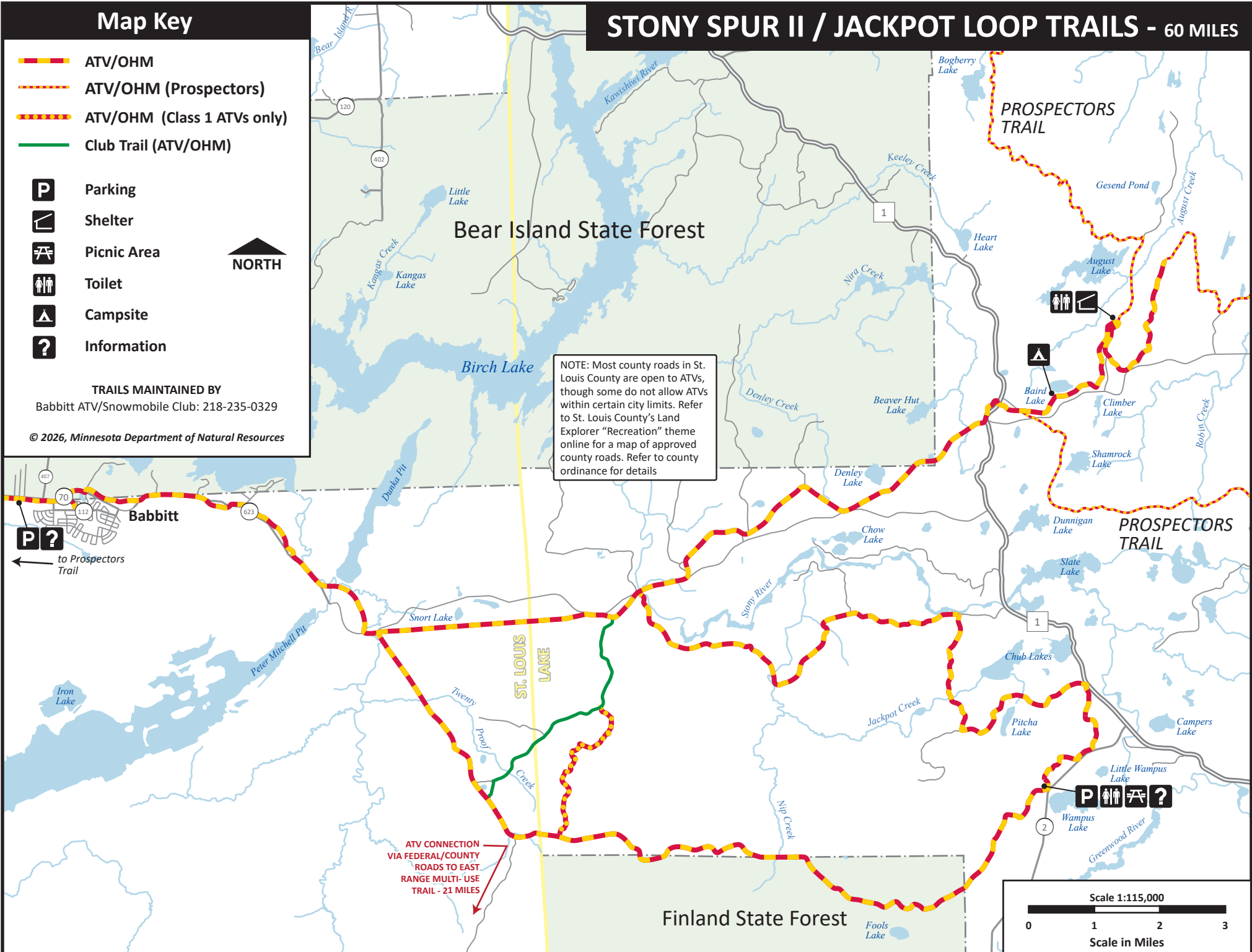


TRAILS MAINTAINED BY

Babbitt ATV/Snowmobile Club: 218-235-0329

© 2026, Minnesota Department of Natural Resources

NOTE: Most county roads in St. Louis County are open to ATVs, though some do not allow ATVs within certain city limits. Refer to St. Louis County's Land Explorer "Recreation" theme online for a map of approved county roads. Refer to county ordinance for details



ATV CONNECTION VIA FEDERAL/COUNTY ROADS TO EAST RANGE MULTI-USE TRAIL - 21 MILES

