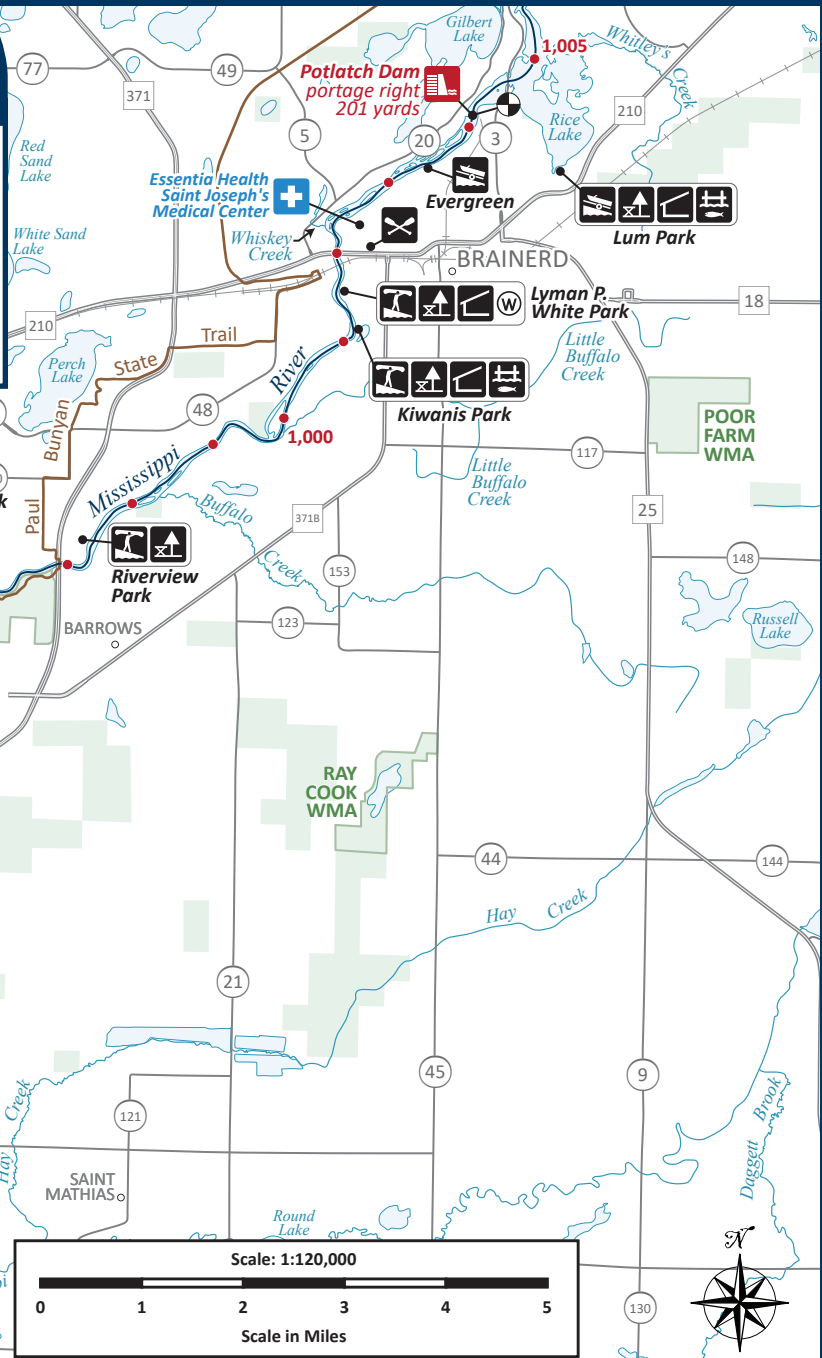
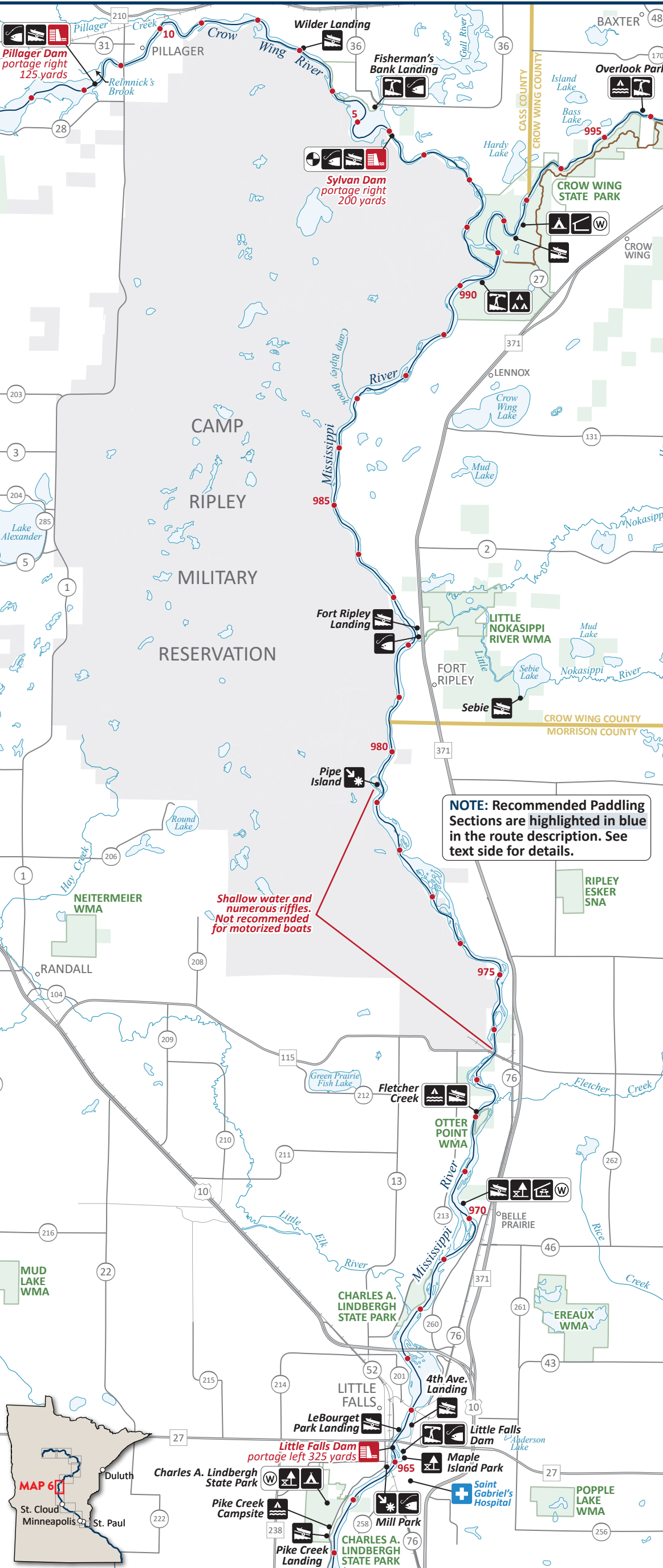


MISSISSIPPI RIVER STATE WATER TRAIL

MAP 6 - Brainerd to Little Falls

Carry-in Access	Fishing Pier	Campground	Drinking Water	State Trail (paved)
Trailer Access	Shore Fishing	Watercraft Campsite	State Public Lands	WMA Wildlife Management Area
Hospital/Clinic	Point of Interest	Primitive Group Camp	Public Lands	SNA Scientific and Natural Area
Shelter	Outfitters	Dam	River Level Gauge	River Miles
Rest Area				



ROUTE DESCRIPTION

River miles 1,005 to 963 (42 miles)

(R) and (L) are right and left banks of the river when facing downstream. Red text indicates caution areas.

Continued on Map 5: Mississippi River State Water Trail Aitkin to Brainerd

1004.7 (L)	Lum Park: Trailer access, rest area, shelter and fishing pier.
1004.1 (R)	Potlatch Dam: Portage right 201 yards.
1003.4	Evergreen: Trailer access.
1002	MN Hwy 210 bridge.
1001.5 (L)	Lyman P. White Park: Carry-in access, rest area, shelter.
1001.2 (L)	Kiwanis Park: Carry-in access, rest area, shelter and fishing pier.
998.2 (L)	Buffalo Creek confluence.
997.3	Riverview Park: Carry-in access, picnic and toilets.
997	MN Hwy 371 bridge. Paul Bunyan State Trail.
997-979.5 (L)	Crow Wing State Park: Includes numerous water accesses, camping, shelters and drinking water.
995.8 (R)	Overlook Park: Carry-in access, watercraft campsite
990.6 (R)	Crow Wing River confluence.
990.4 (L)	Crow Wing State Park access. Group camp (fee).
982.3 (L)	Fort Ripley Landing: Trailer access. Shore fishing downstream of the access.
979.5-979.2	Pipe Island. Numerous smaller islands downstream.
973.6	MN Hwy 115 bridge. South boundary of Camp Ripley.
972.7 (R)	Fletcher Creek: Trailer access and watercraft campsite
972.3-971.7	Otter Point Wildlife Management Area.
970.2 (L)	Belle Prairie County Park: Trailer access, rest area, large picnic shelter and drinking water.
967.8 (R)	Little Elk River confluence.
967.2	U.S. Hwy 10 bridge.
965.6	LeBourget Park/4th Ave. Landings. Accesses are on both sides of the river.
965.2 (L)	Little Falls Dam: Portage left 325 yards.
965.1 (L)	Little Falls Dam: Carry-in access and shore fishing.
965 (L)	Maple Island Park: Rest area, picnic area and toilet.
964.8 (R)	Mill Park: Shorefishing and historical site.
964-963.1 (R)	Charles A. Lindbergh State Park: Includes camping, rest areas and drinking water.
963.4 (R)	Pike Creek Campsite: Watercraft campsite
963.3 (R)	Pike Creek Landing trailer access.

Continued on Map 7: Mississippi River State Water Trail Little Falls to St. Cloud